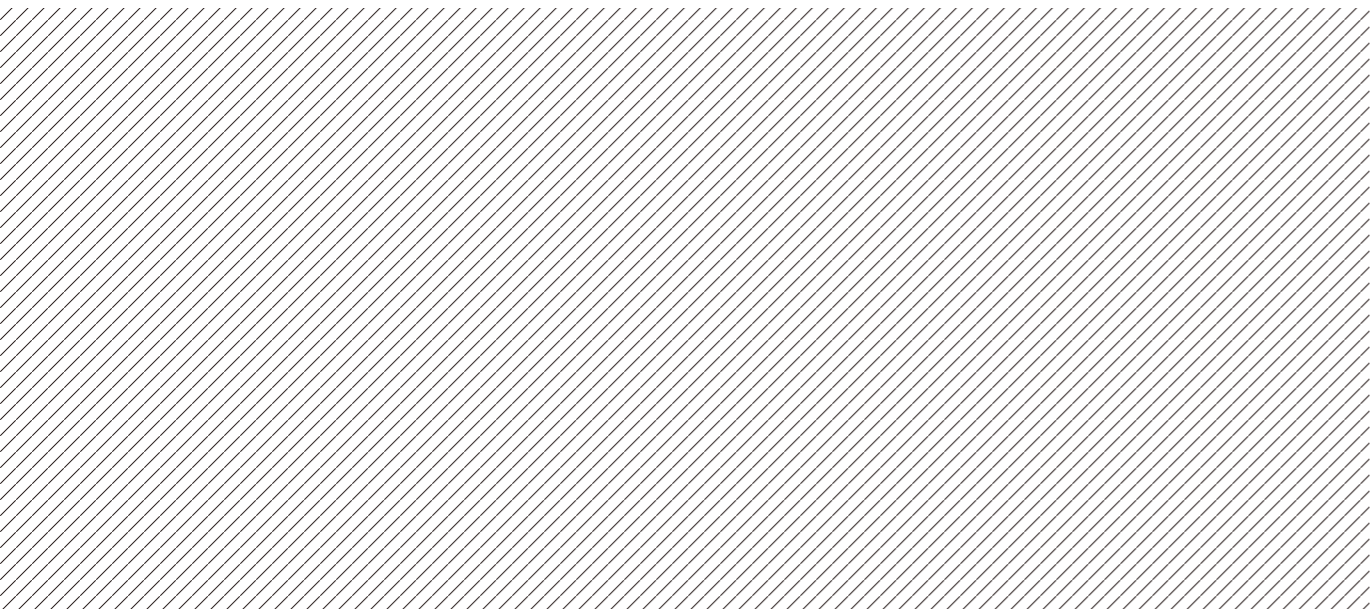


让生活更完美
Perfect Your Life



江苏富奥电梯有限公司

办公地址

地址：江苏昆山市苇城南路1666号
电话：0086-512-50720078
传真：0086-512-50720079
邮箱：perfectelevator@gmail.com

工厂地址

地址：江苏大丰市常高新开发区常青路2号

<http://www.fuaoelevator.com>

Jiangsu FUAO Elevator Co., Ltd.

OFFICE

Add: No.1666 Weicheng South Road, Kunshan,
Jiangsu, China.
Tel: 0086-512-50720078
Fax: 0086-512-50720079
E-mail: perfectelevator@gmail.com

FACTORY

Add: No.2 Changqing Road, Changzhou High
Tech Zone, Dafeng, Jiangsu, China.



江苏富奥电梯有限公司
Jiangsu FUAO Elevator Co., Ltd.



目录 Contents

公司简介	03	Company Profile
公司文化	04	Company Culture
资质荣誉	06	Qualification Honor
电梯优势	08	Elevator Advantages
控制系统优势	10	Control System Advantages
扶梯优势	14	Escalator Advantages
选配功能	16	Optional Functions
质量承诺	18	Quality Commitment
产品介绍	20	Product Introduction
电梯装潢	38	Elevator Decoration
公司业绩	48	Sales Achievements

► 公司简介

江苏富奥电梯有限公司成立于2010年，是一家专业研发设计、制造、安装，维保电梯、自动扶梯、自动人行道、立体停车库的综合型整机厂家，公司产品具有结构牢固、运行可靠、损耗小、效率高、控制精确、运行平稳、舒适性更高，等诸多优点。

公司凭借优秀的人才，新型的生产设备，先进的技术和理念，为全球客户提供安全可靠的产品和细致完善的服务。

富奥品牌电梯已畅销东南亚、南美洲、非洲、欧洲、中东等多个地区。富奥电梯以市场开拓为中心，技术进步为后盾，人才开发为支柱，现代化管理为手段，经济效益为目标，推动持续稳定发展。充分吸取了先进技术与管理模式，并结合市场要求，开发了高品质的永磁同步无齿轮乘客电梯，变频变压控制的载货电梯，无机房的观光电梯，液压驱动的别墅电梯，结构新颖的医用电梯，承载提载能力强的汽车电梯，精简、易操作的杂物电梯，高强度桁架的自动扶梯与人行道，产品覆盖范围广，性能可靠，服务质量优越，价格合理，得到用户的一致好评。

► Company Profile

Jiangsu FUAO Elevator Co., Ltd. was founded in 2010. FUAO Elevator is a professional designer, researcher, manufacturer, installer and maintenance of elevator, escalator, passenger conveyor and car parking system. The series product with the more advantages of strong structure, operation reliable, high efficiency, control precision, operation smoothly, high comfortable and so on.

Combined excellent talents, new model production equipment and advantages of technology and concepts, FUAO Elevator provide the more safety product and perfect service for global clients.

FUAO Elevator has exported to many countries in Southeast Asia, South American, European, Africa and Middle East. FUAO Elevator develop market as aim, technology progress as backing, talents development as pillar, modern management as method, economic efficiency as goal to put the company sustainable and stable development. FUAO Elevator bring in the advanced technology and management team, combined with market demands, we have researched the high-quality permanent magnet synchronous gearless Passenger elevator, VVVF Freight elevator, Machine Roomless Panoramic elevator, Hydraulic Villa elevator, New structure Hospital elevator, big capacity Car elevator, simple dumbwaiter, High strength Escalator and Passenger conveyor. We have won a good reputation from clients via wide coverage product, reliable performance, nice service and reasonable price.



企业文化

富奥电梯企业成立以来，以长三角区域的电梯产业链为基础，结合拥有数年海外电梯指导调试经验的工程师，旨在优化传统电梯机械结构和电气控制系统，研制开发新型绿色节能环保电梯，并最终向海内外推广和量化，一改世界电梯行业对“中国制造”廉价低效的传统认知，重新树立中国电梯民族企业世界范围内的强势地位，竭尽所能对电梯行业作出我们的贡献。

企业理念：让生活更完美

满足用户的需求，为您提供最优质的服务。秉承“技术第一、品质第一、服务第一”的经营理念，依靠的现代化管理体系，构成了完善、高效的产品销售和售后服务体系，将推动富奥电梯开拓出更为广阔的发展领域。

服务宗旨：一丝不苟，有章必循

以保证成品质量，提供客户满意的服务和及时的交货期，深受新老客户的欢迎。本公司愿与电梯界同仁广交朋友，希望为国内外广大电梯用户提供满意的产品和服务。

质量方针

品质优良：符合国际和国家标准，以顾客满意为宗旨，向顾客提供优质产品

预防为主：对全过程实行有效监控，杜绝品质不良的现象

精工细做：精益求精，细致地做好每一件产品的加工，每一项工作

安全节能：建立安全生产责任制，杜绝事故发生；降低能源和原材料消耗

持续改进：公司管理、开发设计和生产制造的品质的改进随着顾客要求的发展 是没有止境的

信诚服务：以真诚的态度提供符合顾客需求的优质服务

Company Culture

Since established, FUAO aim to optimized elevator mechanical and electrical control system; research and develop new green energy-saving Environmental protection elevator for the market. Establish China National elevator brand in world elevator enterprise, and make our contribution to the elevator industry.



Enterprise philosophy: Perfect your life

Meet clients' requirements and provide best service. Adhering "Technology Top, Quality Top, Service Top" as our management philosophy. Constitute perfect and high efficiency sales and services system, and promote FUAO to a wider development field;

Service aim: Strictly and follow rules

Ensure product quality, and provide satisfaction and timely delivery for client. We sincerely hope that we can supply satisfaction product and service for all clients.

Quality policy

Good Quality:

Meet CE and GB standard. Customer satisfaction as purpose and provide good quality product;

Advanced Prevention:

Effect monitor for whole process, and avoid poor quality happened;

Excellence:

Make each parts and work excellence;

Safety and Energy Saving:

Establish safety production responsibility system; Reduce energy and raw material consumption;

Continuous Improvement:

Endless improvements for company management, design, develop, manufacture and service;

Honestly Service:

Provide good service to client as honestly attitude;



质量管理体系认证证书
GB/T19001-2008 idt
ISO9001:2008



职业健康安全管理体系认证证书
GB/T28001-2001



环境管理体系认证证书
GB/T24001-2004 idt
ISO14001:2004



资质荣誉 Qualification Honor



CE TÜV

► 电梯优势

- ✓ 施耐德接触器
- ✓ UPS系统
- ✓ 配件市场使用广泛
- ✓ 接口板冗余设计

1. 采用无称重高精度补偿，控制系统自动计算，无需维保人员经常校正称重数据。
2. 采用国际标准，设计更加合理化、人性化，运行更加可靠，安装更加快捷。
3. 采用永磁同步曳引机，免润滑，电梯更加安静平稳，比传统主机节能40%以上，更加绿色、环保。
4. 轿厢采用发泡工艺，电梯运行更加安静、平稳。
5. 采用一体机，免除线路多造成更多的故障。
6. 控制柜采用接口板连接，井道电缆、随行电缆、强弱电分离走线可靠快捷。
7. 采用双VVVF驱动，电梯调试更加人性化，运行更节能，更舒适，更安全，更可靠。
8. 接口板冗余设计。避免插件误插，采用安普插件 配件配套方便，市场使用广泛。
9. 采用普通UPS驱动，停电时，瞬间就近平层开门，最关键的是价格 配套方便 市场使用广泛。免维保免故障。

► Elevator Advantages

- ✓ Schneider contactor
- ✓ UPS system
- ✓ Common and used widely spare parts
- ✓ Redundancy design for interface board



1. Using no-weighting high precision compensation control system to calculate automatically. Non-necessary for the maintenance person to revise weighting data;
2. Adopting the international standard, design is more rationalization humanism, operation is more reliable, installation is more convenient;
3. Using permanent magnet synchronous traction machine, exempting lubrication. The lift is more quiet and steady, energy saving 40% more than the traditional motor that is more grassy and pro-environment;
4. Adopting the foaming technology for cabin which makes the lift more quiet and steady;
5. Using the integrated control system, avoid the more faults from more wiring;
6. Interface board for controller; separation wiring for shaft cable, travelling cable and high voltage and Weak electric wire. it more reasonable and fast;
7. Using the VVVF drive, make the testing more humanism, operation is more energy saving, more comfortable, more safety and reliable;
8. Redundancy design for interface board. Avoid of wrong plug in. Common and used widely spare parts;

► 控制系统优势



✓ 优秀的一体机控制系统

一体机是将变频器和微机板二合一，使电梯调试与维护更方便，是电梯最优化的整合方案。

传统PLC控制是传统用的可编程逻辑控制器件，为液压电梯常用的一种控制系统。基于液压电梯结构的特殊性，这种控制方式已经被先进的VVVF控制所取代。

✓ 富奥6大先进控制技术

1. 采用先进的VVVF多模块的控制系统，打造核心品牌文化。
2. 传置传感器的运用使电梯运行的过程中能更精确地探测到轿厢位置，从而使系统能够按照速度曲线平稳行使，实现直接停靠，缩短运行时间。
3. 变频变压调速系统能自动计算出最佳速度曲线，并对电压和频率根据速度和负载的需要，连续不断的PIC控制，实现最精确地电梯运行控制。
4. UPS应急平层系统，使电梯更加安全即使在断电、停电的情况下也可以在第一时间解救乘客。
5. 富奥公司针对LED灯节能效果好、使用寿命长等特点，在开发之初就确定其为标准配置。在实际使用中一直受到客户的好评。
6. 32位微处理ARM技术。

► Control System Advantages



✓ Excellent integrated control system

Integrated control system is the advanced products in elevator field which make the inverter and main board as one unit. It is more convenient for commission and maintain.

✓ FUAO Elevator 6 advanced control technology

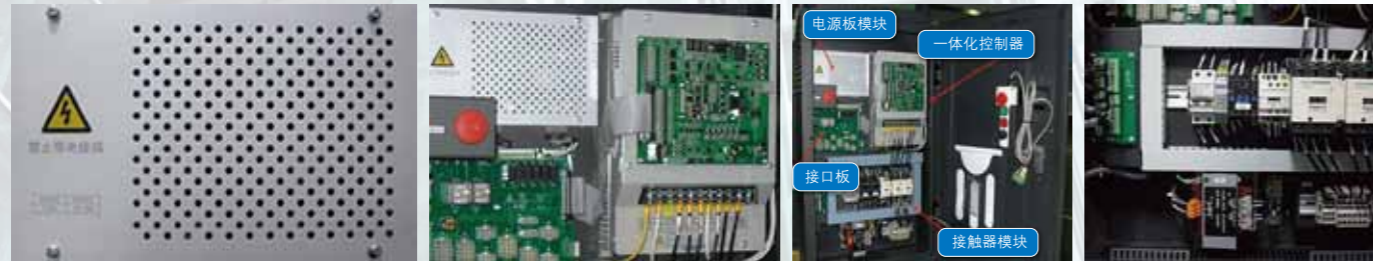
1. The advanced VVVF control system, creating the core brand;
2. Position sensor can detect the exact lift cabin position, and then make the lift run normally according the speed diagram. It can realize stop directly and shorten the lift running time;
3. VVVF speed adjustment can calculate the best speed diagram. It can come to the best lift running control by the requirement of speed and load. Continuously PIC control can realize the precision lift operation control;
4. UPS Emergency leveling device can make the lift run to the nearest floor and open the door to release the passengers when the power fails. It makes lift more safety;
5. LED dot matrix have good energy saving, long service life. Before designing, we set these lights as standard configuration. By now they have gotten good reputation from clients;
6. 32 bits ARM microprocessor technology;

✓ 电源一体化设计及创新

1. 抱闸电源和24V电源一体化设计。
2. 电源板模块具有抱闸强激、降压保持的功能。
3. 通过触发信号实现斜线撤电压功能，减小抱闸动作声音。
4. 抱闸线圈电压DC220/DC110通过内部拨码开关自由选择。

✓ 模块间连接

1. 模块间采用接插件的方式连接。
2. 一体化机与接口板之间采用40pin排线连接，将主控板的输入输出信号引入接口板 (22个输入信号，6个输出信号)。



✓ 模块化控制柜主要组成

1. 一体化控制器模块
2. 电源板模块
3. 接口板模块
4. 接触器模块
5. 变压器模块

✓ 附件

1. 检修手柄
2. 制动电阻箱
3. 提前开门模块
4. AC36V变压器

✓ 电气配置元件选择标准

选择行业中最广泛、评价较高的产品。

✓ Power integrated design and Innovation

1. Integrated design for brake power and 24v power supply;
2. Power supply module with brake strong excitation and lower voltage function;
3. Reduce the brake active noise via trigger signal;
4. Free choose the brake coil voltage DC220/DC110 via code switch;

✓ Module connection

1. Module connect by plug in connector;
2. The integrated and interface board connection by 40 pin terminal, and bring in the input and output signal to interface board. (22 input signal and 6 output signal).

✓ Module controller main parts

1. Integrated control module; /2. Power supply module; /3. Interface board module;
4. Contactor module; /5. Transformer module;

✓ Accessories

1. Inspection handle; /2. Brake resistor box; /3. Open door advanced module;
4. AC36V Transformer;

✓ Electrical parts selection standard

Choose the common widely used and high evaluation parts.

扶梯优势 Escalator Advantages



桁架结构 Truss structure

上下弦杆分别采用120x120及100x60矩形管，优质工艺制作，比角钢结构强度高，稳定性强，避免桁架晃动。

Respectively by means of 120 * 120 and 100 * 60 rectangular tube, the high quality of the production process, than Angle structure high strength, strong stability, avoid truss shaking.



电气部件 Electrical component

我们的PLC、继电器等均采用国际知名品牌，经久耐用。

Our PLC contactor relays are adopt international famous brand, durable.



扶梯梯级链条 Escalator step chain

采用公共交通型35CrMo合金钢链板，破断强度为180KN，提高了链条的使用寿命，全聚氨酯滚轮配合专用滚动轴承能有效实现降低运行时的噪音，使扶梯运行更为平稳。

Using heavy duty type 35 CrMo alloy steel chain plate, the breaking strength is 180KN and long life. The polyurethane roller with rolling bearing can reduce operation noise effectively, and the escalator running more smoothly and quite.



主机 Machine

采用知名品牌扶梯主机。主机传动效率高、运行噪音低、性能稳定、节能环保。

Using the well-known brand escalator machine. the machine with high operation effective. low noise, stable performance, energy-saving and environmental protection.



扶手导轨 Handrail guide rail

采用430不锈钢材质，提升扶梯外观质感。降低扶手带与扶手导轨的摩擦系数，能有效解决扶手带的发热，大大提高扶手带的实验寿命。

The material for bracket as #430 stainless steel. It can reduce the friction factor between handrail and handrail guide.



主驱动链条涨紧装置 Main drive chain tension device

主驱动链条过紧或过松会影响扶梯运行的舒适感，通过调节主驱动涨紧装置，能够使主驱动链条达到最佳的松紧程度。

The main drive chain too tighten or too loosen will effect the escalator operation intimacy. Though adjusting the main drive tension device, it can make the main drive chain to the best tightness state.



主机固定方式 Machine fix method

采用螺栓顶紧的固定方式，而非螺栓螺母锁紧的固定方式，避免因螺栓等固定装置受力太大断裂而造成主机移位。

Using blot top tighten way to fix machine, not the traditional way as blot and nut to fix. The fix way can avoid machine movement by blot breakage.



围裙板 Skirting panel

采用不锈钢材质，提升扶梯外观质感。

Adopt stainless steel material, to improve the appearance of the escalator texture.

选配功能 *Optional Functions*



附加制动器 Auxiliary brake

类似汽车碟刹装置的附加制动器，通过调节相关部件位置，能够精准控制因梯级逆行附加制动器动作而产生的制动距离，达到柔性刹车的目的。

Auxiliary brake likes the disc brake device on car, it adjusts the brake distance and make brake softly in case the escalator run in opposite direction.



间歇运行(自动启动/停止) Intermittent operation (Automatic start / stop)

光眼安装在自动扶梯(人行梯)的入口，能够灵敏地感应到行人的进入。当长时间无人乘梯时，自动扶梯(人行梯)将自动停梯，达到有效节能的目的。

Light sensors are installed in the panel of escalator(moving walk) entrances, when no passengers take the escalator (moving walk) in certain time, it will stop automatically to save energy.



加热装置 Heating device

上部安装在上机房主机边，主要对上部机房进行加热，中部安装在扶梯中部，下部安装在下机房，主要对整个梯路进行加热。

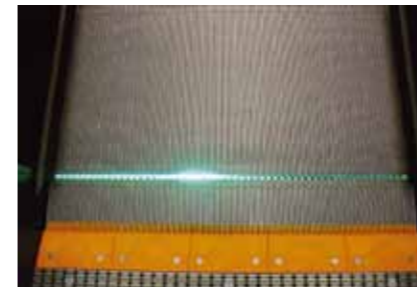
Usually there are three heating devices installed in each escalator, the upper, middle and bottom. The upper one is installed near the motor to heat the motor room, the middle one is installed in the middle of escalator and the bottom one is stalled in the bottom motor room to heat whole escalator.



运行方向指示 Running direction indication

运行方向和禁行显示标识置于扶手带出入口处，以显而易见的运行或禁行指示，确保乘客安全自如地乘坐。

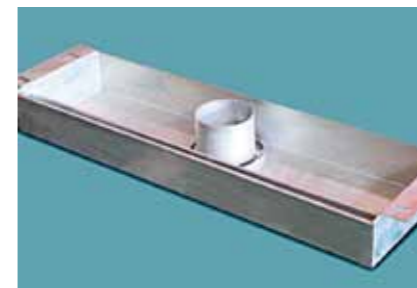
It shows the escalators (moving walk) running direction, so that it can remind the passengers to note the escalator running direction to ensure the security for passengers.



梯级照明 Step illumination

绿色荧光柔和地从上/下端部相邻两节梯级(踏板)的啮合齿口中照射出，以提醒乘客注意梯级进出水平段，提高乘梯安全。

Green light comes out from the space between engaged teeth of two neighbouring steps to remind passengers to note the horizontal steps both at entrance/exit sides, increasing the security for passengers.



油水分离器(适用于室外型) Oil-water separator (for outdoor type)

将扶梯的油水进行分离，雨水通过油水分离器排出，油污进行定期清洗，主要起到环保作用。

It separates the escalator oil and water, exhausts the rain water and cleans the oil spot regularly for environment protection purpose.

扶手颜色 Handrail color



浅褐色 Light brown

橙 Orange

浅绿蓝
Shallow bluish green

红 Red

蓝 Blue

灰 Gray

▶ 质量承诺

✓ 产品价值最大化,服务顾客无止境

关注您的所需,站在您的立场,提供完美、高标准的服务保障。这是富奥电梯赢得市场的制胜法宝!您的满意是富奥电梯前进的永恒动力!

✓ 周密应对方案

- 非标准化定制服务;优先解决客户问题;7X24小时不间断服务。
- 售后服务中心提供咨询、工程投诉、信息反馈、分析建议、客户培训、远程监控等系统服务。

✓ 无忧技术支持

富奥电梯工程师会对每位客户进行一年两次的巡回检查和维保。同时,每年两次对代理商进行免费培训,新技术新产品及新改进功能都会做详细讲述。

✓ 便捷服务网络

富奥电梯在全球共设立了8个工作站,中国覆盖上海、北京、天津,以及江苏、浙江、广东、福建、四川、安徽、江西、内蒙古、新疆等各省。国外工作站覆盖南美洲、欧洲、非洲等地。7/24小时服务网络,随时为客户解忧。富奥电梯的工作站及售后服务中心会随客户群的需求不断增加,以满足客户所需的各种服务。



▶ Quality Commitment

✓ Product value maximization; Endless customer service

We concern about customer needs and we put our own feet in customers' shoes. Providing high standard service is the key to keep FUAO competitive in the market. Satisfying customer needs is what FUAO's pursue.

✓ Sophisticated solution

- We design the lift according to customers' special specification; we aim to solve problem asap we receive call from after-sales service hotline opens 7*24 hours.

- After-sales services department provides consultation, project complaints, information feedback, analyzed suggestions, customers training, and remote monitoring system service.

✓ Powerful technical support

FUAO engineers will inspect and maintain our lift all over the world one time a year. Meanwhile, FUAO will provide free training for agents regarding the latest technology and products and will demonstrate new functions in details.

✓ Convenient service network

FUAO elevator has set branches' in the following cities: Beijing, Shanghai, Tianjing, Jiangsu, Zhejiang, Guangzhou, Anhui and Jiangxi. FUAO service network covers all over China to achieve real hassle free after sales service.

富奥产品

富奥电梯拥有全线产品，包括：有机房乘客电梯、无机房乘客电梯、观光梯、医用梯、载货电梯、家用电梯（别墅电梯）、杂物梯、自动扶梯30°/35°、自动人行道水平型、自动人行道紧凑型、立体停车库。

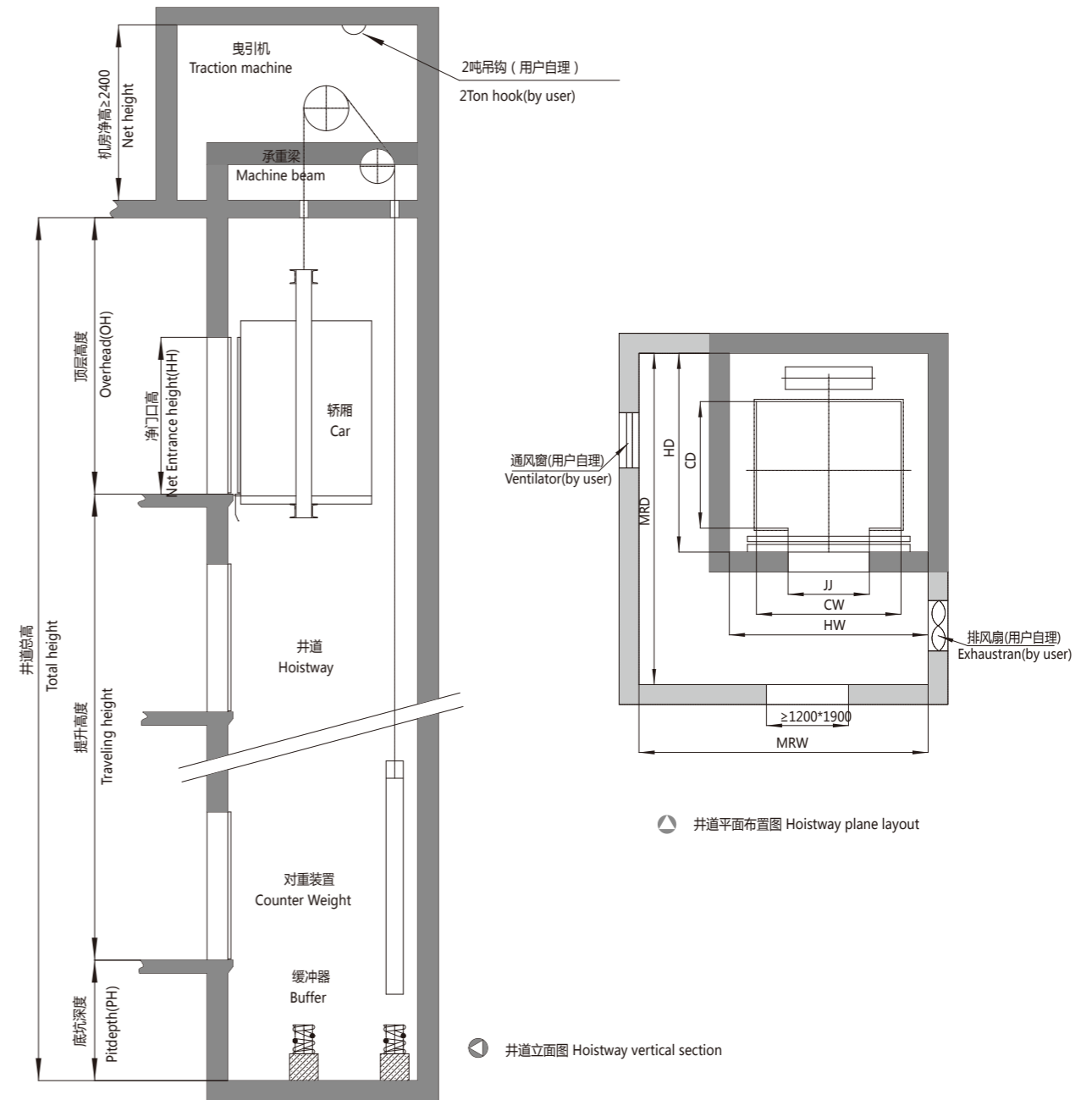
FUAO Product

FUAO design and manufacture full range of elevator, it include Passenger elevator, MRL elevator, Panoramic elevator, Hospital elevator, Freight elevator, Home elevator, Dumbwaiter, Escalator, Passenger Conveyor and Car parking system.



有机房乘客客梯 MR Passenger Elevator

TKJ交流变频变压调速
TKJ AC-VVVF



土建参数

Layout Parameters

✓ TKJ交流变频变压调速
TKJ AC-VVVF

主参数 Main specifications (1)

载重量(Kg) Loading capacity	450		630				800				1000				
额定速度(m/s) Rated speed	1.0	1.5	1.0	1.5	1.6	1.75	1.0	1.5	1.6	1.75	1.0	1.5	1.6	1.75	2.0
开门尺寸(mm) Door opening size	800	800	800	800	800	800	800	800	800	800	900	900	900	900	900
轿厢尺寸(mm) Car size	宽 Width	1100	1100	1400	1400	1400	1400	1400	1400	1400	1600	1600	1600	1600	1600
	深 Depth	1100	1100	1100	1100	1100	1100	1350	1350	1350	1350	1500	1500	1500	1500
井道尺寸(mm) Hoistway size	宽 Width	1800	1800	2000	2000	2000	2000	2000	2000	2000	2200	2200	2200	2200	2200
	深 Depth	1750	1750	1850	1850	1850	1850	2050	2050	2050	2050	2200	2200	2200	2300
机房尺寸(mm) Machine room size	宽 Width	1800	1800	2500	2500	2500	2500	2500	2500	2500	3000	3000	3000	3000	3000
	深 Depth	3200	3200	3700	3700	3700	3700	3700	3700	3700	3700	3700	3700	3700	3700
	高 Height	2500	2500	2500	2500	2500	2500	2500	2500	2500	2500	2500	2500	2500	2500
顶层高度(mm) Top floor height	4400	4600	4400	4600	4600	4800	4400	4600	4600	4800	4400	4600	4600	4800	4900
底坑深度(mm) Pit depth	1500	1700	1500	1700	1700	1700	1500	1700	1700	1700	1500	1700	1700	1700	2000
最大提升高度(mm) Max. travelling height	50	60	50	60	60	80	50	60	60	80	50	60	60	80	120

主参数 Main specifications (2)

载重量(Kg) Loading capacity	1150				1250				
额定速度(m/s) Rated speed	1.0	1.5	1.6	1.75	1.0	1.5	1.6	1.75	2.0
开门尺寸(mm) Door opening size	1100	1100	1100	1100	1100	1100	1100	1100	1100
轿厢尺寸(mm) Car size	宽 Width	1800	1800	1800	1800	1950	1950	1950	1950
	深 Depth	1400	1400	1400	1400	1400	1400	1400	1400
井道尺寸(mm) Hoistway size	宽 Width	2450	2450	2450	2450	2600	2600	2600	2600
	深 Depth	2150	2150	2150	2150	2250	2250	2250	2300
机房尺寸(mm) Machine room size	宽 Width	3000	3000	3000	3000	3200	3200	3200	3200
	深 Depth	3700	2700	2700	3700	3700	3700	3700	3700
	高 Height	2500	2500	2500	2500	2500	2500	2500	2500
顶层高度(mm) Top floor height	4500	4700	4700	4800	4500	4700	4700	4800	5000
底坑深度(mm) Pit depth	1500	1700	1700	1700	1500	1700	1700	1700	2000
最大提升高度(mm) Max. travelling height	50	60	60	80	50	60	60	80	120



主参数 Main specifications (3)

载重量(Kg) Loading capacity	1350					1600					2000
额定速度(m/s) Rated speed	1.0	1.5	1.6	1.75	2.0	1.0	1.5	1.6	1.75	2.0	1.0
开门尺寸(mm) Door opening size	1100	1100	1100	1100	1100	1100	1100	1100	1100	1100	1500
轿厢尺寸(mm) Car size	宽 Width	1950	1950	1950	1950	1950	1950	1950	1950	1950	1500
	深 Depth	1500	1500	1500	1500	1500	1750	1750	1750	1750	2700
井道尺寸(mm) Hoistway size	宽 Width	2600	2600	2600	2600	2600	2600	2600	2600	2600	2700
	深 Depth	2350	2350	2350	2350	2350	2600	2600	2600	2600	3200
机房尺寸(mm) Machine room size	宽 Width	3200	3200	3200	3200	3200	3200	3200	3200	3200	3400
	深 Depth	3700	3700	3700	3700	3700	4000	4000	4000	4000	4500
	高 Height	2500	2500	2500	2500	2500	2500	2500	2500	2500	2500
顶层高度(mm) Top floor height	4500	4700	4700	4800	5000	4500	4800	4800	4800	5000	4800
底坑深度(mm) Pit depth	1500	1700	1700	1700	2000	1500	1700	1700	1700	2000	1600
最大提升高度(mm) Max. travelling height	60	80	80	100	120	50	80	80	100	120	50

主参数 Main specifications (4)

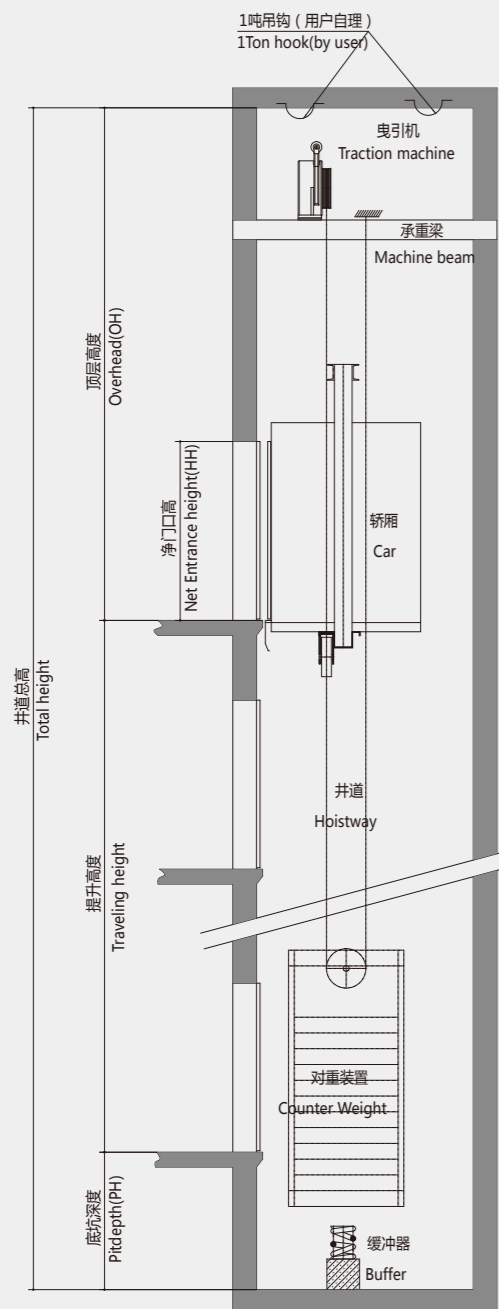
载重量(Kg) Loading capacity	1000		1150		1250		1350		1600	
额定速度(m/s) Rated speed	2.5	3.0	2.5	3.0	3.0	2.5	3.0	2.5	2.5	3.0
开门尺寸(mm) Door opening size	900	900	1100	1100	1100	1100	1100	1100	1100	1100
轿厢尺寸(mm) Car size	宽 Width	1600	1600	1800	1800	1800	1950	1950	1950	1950
	深 Depth	1500	1500	1400	1400	1400	1400	1400	1500	1750
井道尺寸(mm) Hoistway size	宽 Width	2200	2200	2450	2450	2450	2600	2600	2600	2600
	深 Depth	2300	2300	2300	2300	2300	2300	2300	2350	2600
机房尺寸(mm) Machine room size	宽 Width	3000	3000	3200	3200	3200	3200	3200	3200	3200
	深 Depth	3700	3700	3700	3700	3700	3700	3700	3700	4000
	高 Height	2500	2500	2500	2500	2500	2500	2500	2500	2500
顶层高度(mm) Top floor height	5200	5200	5200	5200	5200	5200	5200	5200	5200	5200
底坑深度(mm) Pit depth	2200	3200	2200	3200	3200	2200	3200	2200	2200	3200
最大提升高度(mm) Max. travelling height	120	120	120	120	120	120	120	120	120	120



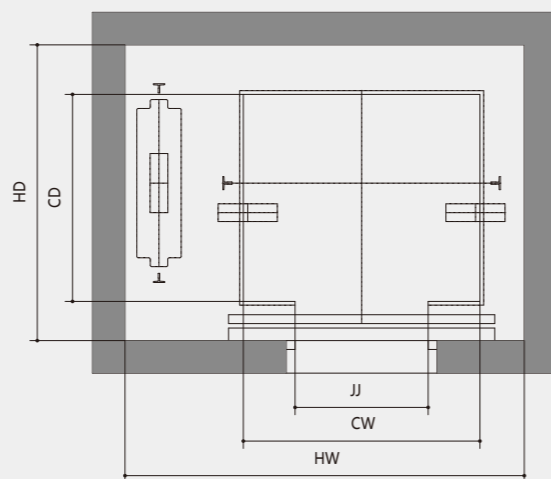
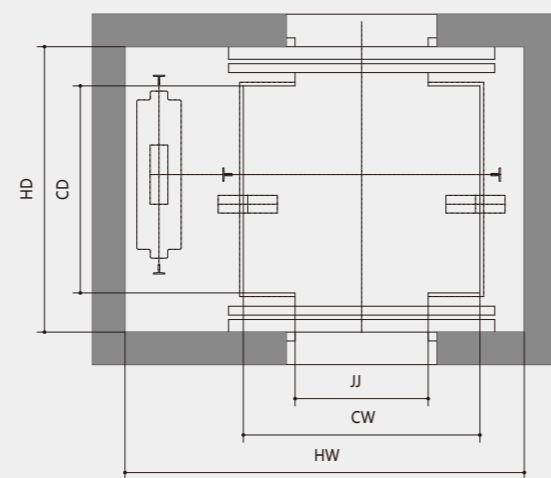
无机房乘客客梯

MRL Passenger Elevator

- TWJ交流变频变压调速
- TWJ AC-VVVF



井道立面图 Hoistway vertical section



井道平面布置图 Hoistway plane layout



无机房乘客电梯技术参数

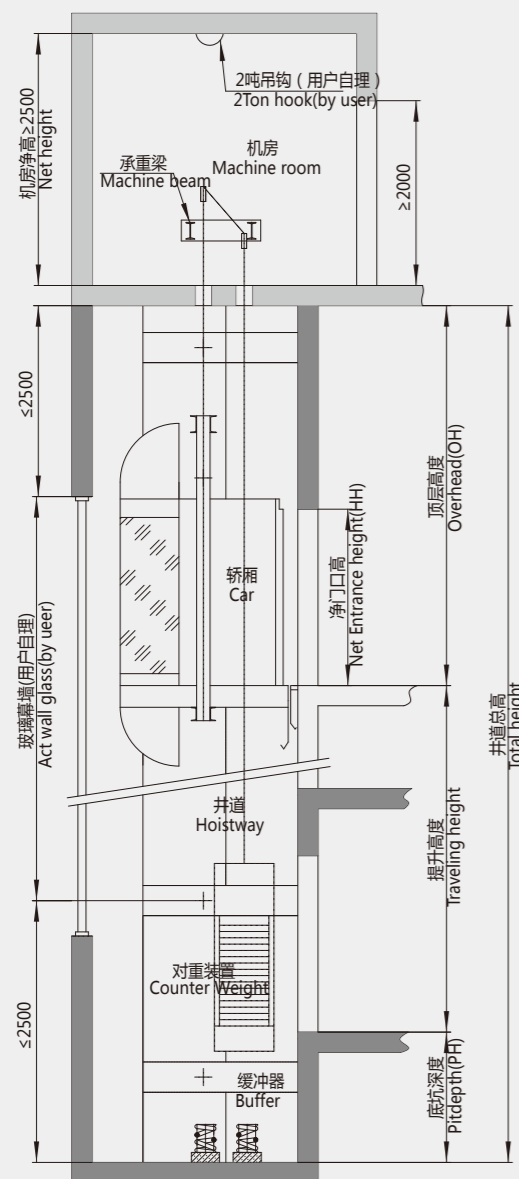
MRL passenger elevator technical parameters

型号 Type	额定速度 Rated speed (m/min)	额定 人数 Persons	井道内部尺寸(mm) Shaft inner size (mm)				支撑反作用力(Kg) Load reaction force (Kg)					
			旁开门尺寸 D.W	轿厢尺寸 C.WxH.C.D	井道尺寸 H.WxH.H.D	顶层 高度 OH	地坑 深度 Pit	R1	R2	R3	R4	R5
TWJ450	60	6	800x2100	1100x1100	2000x1600	3800	1400	4000	3200	2560	3060	1500
	90/105					4000	1600					
TWJ630	60	8	800x2100	1100x1400	2000x1750	3800	1400	6000	4700	3900	4400	1800
	90/105					4000	1600					
TWJ800	60	10	800x2100	1400x1350	2200x1750	4000	1400	7500	5900	4120	4620	2100
	90/105					4200	1600	6500	5200			
TWJ1000	60	13	900x2100	1400x1600	2250x1950	4000	1400	8900	6200	4900	5400	2500
	90/105					4200	1700	9400	6700			
TWJ1250	60	16	1000x2100	2000x1400	2500x2100	4400	1500	8000	2500	5200	6700	8500
	90/105					4600	1700					
TWJ1600	60	21	1100x2100	1600x2100	2650x2500	4500	1500	12000	9000	7900	8400	3000
	90/105					4600	1700	12500	9500			

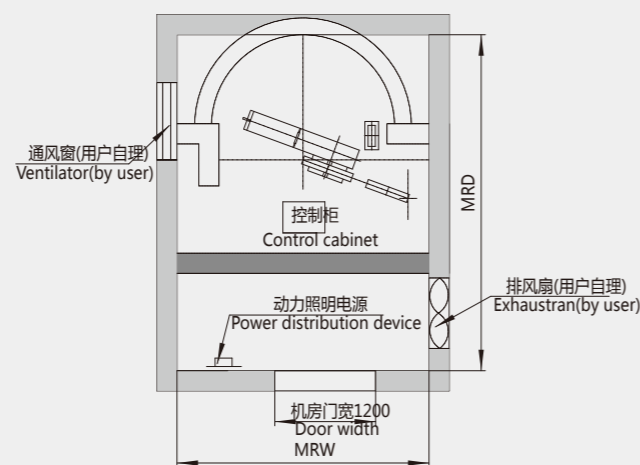


观光电梯 Panoramic Elevator

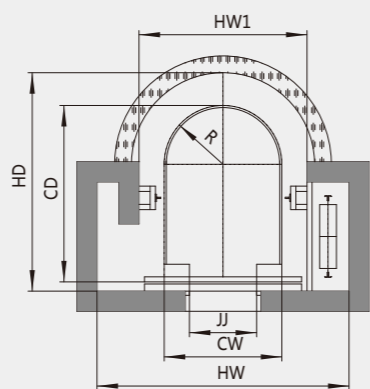
- TGJ 圆柱型
- TGJ Half Round Type



井道立面图 Hoistway vertical section



机房平面布置图 Machine room plane layout



井道平面布置图 Hoistway plane layout



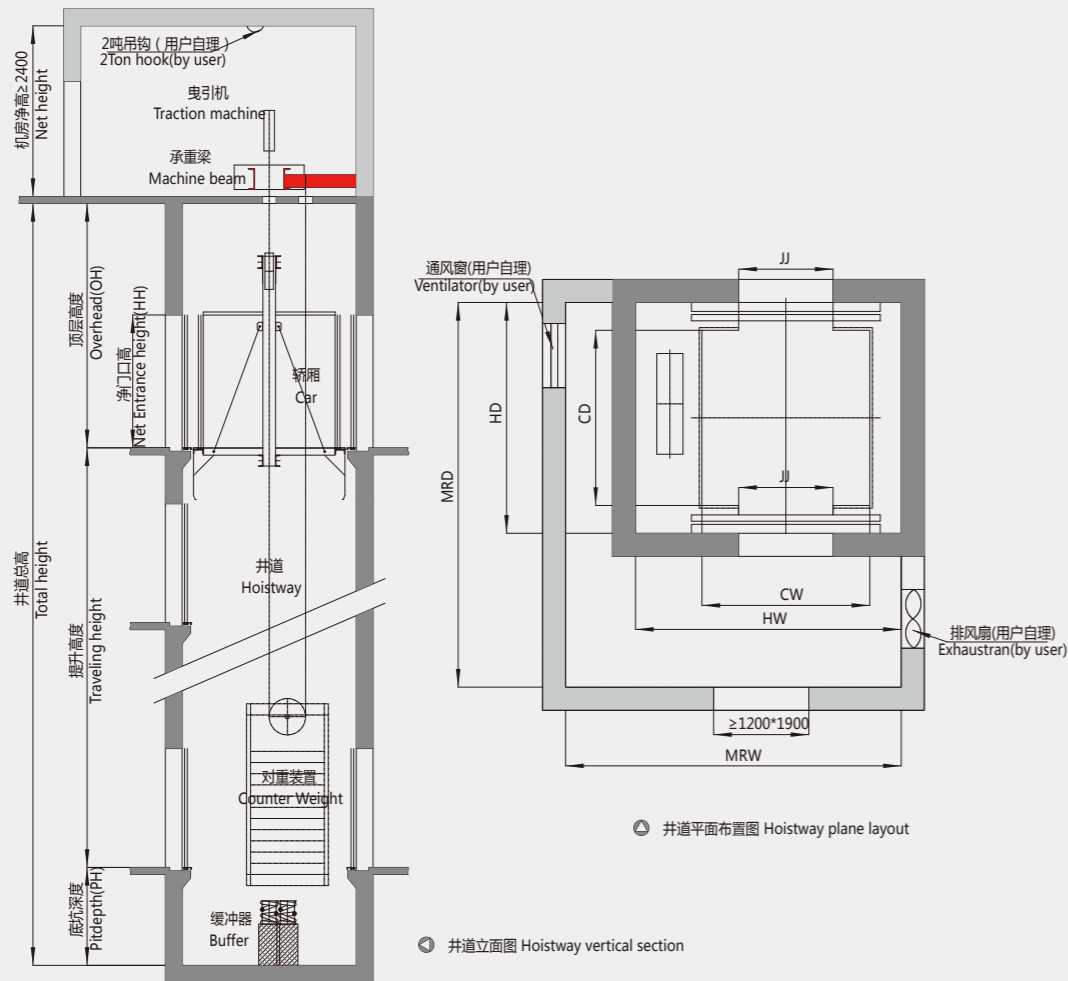
观光电梯技术参数 Panoramic elevator technical parameters

载重量 (Kg) Loading capacity	800				1000					1350				
	1.0	1.5	1.6	1.75	1.0	1.5	1.6	1.75	2.0	1.0	1.5	1.6	1.75	2.0
额定速度 (m/s) Rated speed	1.0	1.5	1.6	1.75	1.0	1.5	1.6	1.75	2.0	1.0	1.5	1.6	1.75	2.0
开门尺寸 (mm) Door opening size	800	800	800	800	900	900	900	900	900	900	900	900	900	900
轿厢尺寸 (mm) Car size	宽 Width	1300	1300	1300	1300	1500	1500	1500	1500	1500	1500	1500	1500	1500
	深 Depth	1680	1680	1680	1680	1750	1750	1750	1750	1750	2150	2150	2150	2150
井道尺寸 (mm) Hoistway size	宽 Width	2300	2300	2300	2300	2400	2400	2400	2400	2400	2400	2400	2400	2400
	深 Depth	2200	2200	2200	2200	2250	2250	2250	2250	2250	2450	2600	2600	2600
机房尺寸 (mm) Machine room size	宽 Width	2300	2300	2300	2300	2400	2400	2400	2400	2400	2400	2400	2400	2400
	深 Depth	4200	4200	4200	4200	4200	4200	4200	4200	4200	4200	4200	4200	4200
	高 Height	2500	2500	2500	2500	2500	2500	2500	2500	2500	2500	2500	2500	2500
顶层高度 (mm) Top floor height	4800	4800	4800	4800	4800	4800	4800	4800	4800	4800	4800	4800	4800	4800
底坑深度 (mm) Pit depth	1900	2000	2000	2000	2000	2100	2100	2100	2200	2100	2100	2100	2100	2200
最大提升高度 (mm) Max. travelling height	50	60	60	80	50	60	60	80	120	60	80	80	100	120



医用电梯 Bed Elevator

✓ TBJ交流变频变压调速
TBJ AC-VVVF



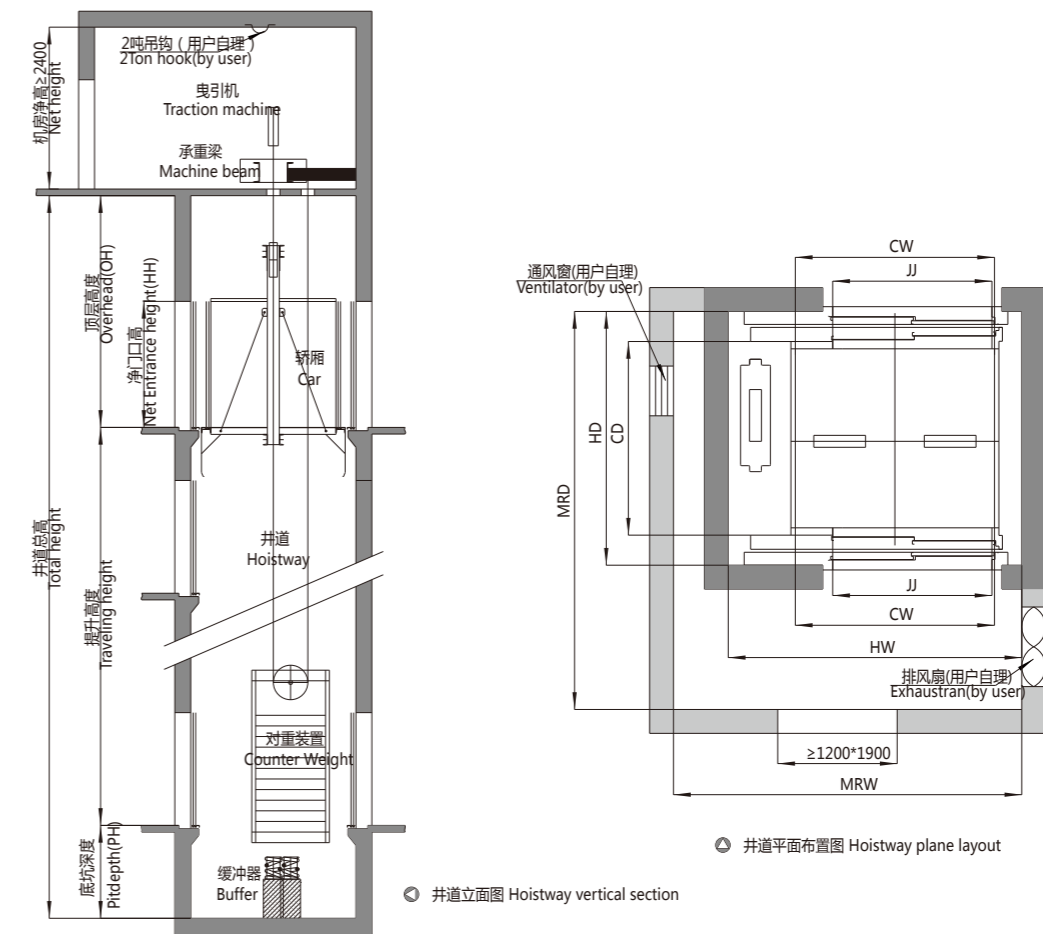
TBJ交流变频变压调速医用电梯技术参数
TBJ bed elevator technical parameters

型号 Type	额定速度 Rated speed (m/min)	额定人数 Persons	井道内部尺寸 Shaft inner size (mm)						支撑反作用力 Load reaction force (Kg)			
			旁开门尺寸 D.W	轿厢尺寸 C.WxH.D	井道尺寸 H.WxH.D	机房尺寸 HR.WxMR.D	顶层 高度 OH	地坑 深度 Pit	R1	R2	R3	R4
TBJ 800	60	10	900 x 2100	1200 x 1700	2100 x 2300	3200 x 3900	4900	1800	7500	5900	4120	4620
	90/105						5000	1900	8000	6400		
TBJ 1000	60	13	900 x 2100	1400 x 1700	2300 x 2300	3400 x 3900	4900	1900	8900	6200	4900	5400
	90/105						5000	1900	9400	6700		
TBJ 1350	60	18	1000 x 2100	1500 x 2000	2400 x 2600	3600 x 4200	4900	1900	11800	9100	6260	6760
	90/105						5000	2000	12300	9600		
TBJ 1600	60	21	1100 x 2100	1400 x 2400	2300 x 3000	4500 x 4000	4300	1600	27000	68000	108000	81600
	90/105						4500	1700				



载货电梯 Freight Elevator

✓ THJ交流载货电梯
THJ AC Elevator



THJ交流载货电梯技术参数
THJ freight elevator technical parameters

型号 Type	载重量 Loading capacity (Kg)	速度 Speed (M/s)	轿厢 Car size (mm)		门宽 Door opening (mm)	净门高 Net gate (mm)	井道 Hoistway (mm)		顶层高 Top floor height (mm)	底坑深 Pit depth (mm)	机房 Machine room (mm)		主机 功率 Power of main engine (kw)
			CW	CD			JJ	HH			HW	HD	
THJ1000/0.5	1000	0.5	1400	1700	1200	2200	2350	2300	4200	1400	3500	3500	7.5
THJ1000/1.0	2000	0.5	2000	2100	1600	2200	2950	2700	4200	1400	3500	4000	11
			1900	2200	1600	2200	2950	2800	4200	1400	3500	4000	11
THJ2000/0.5	3000	0.5	2000	2800	1600	2200	2950	3400			3500	4000	15
THJ3000/0.5	5000	0.25	2500	3600	2400	2200	4000	4250	4600	1600	4000	4250	18.5
THJ5000/0.25	1000	1.0	1400	1700	1200	2200	2350	2300	4500	1600	3500	3500	11
THJ2000/1.0	2000	1.0	2000	2100	1600	2200	2950	2700	4500	1600	3500	4000	18.5
			1900	2200	1600	2200	2950	2800	4500	1600	3500	4000	18.5
THJ3000/1.0	3000	0.5	2000	2800	1600	2200	2950	3400	4500	1600	3500	4000	30
THJ5000/0.5	5000		2500	3600	2400	2200	4000	4250	4600	1600	4000	4250	26



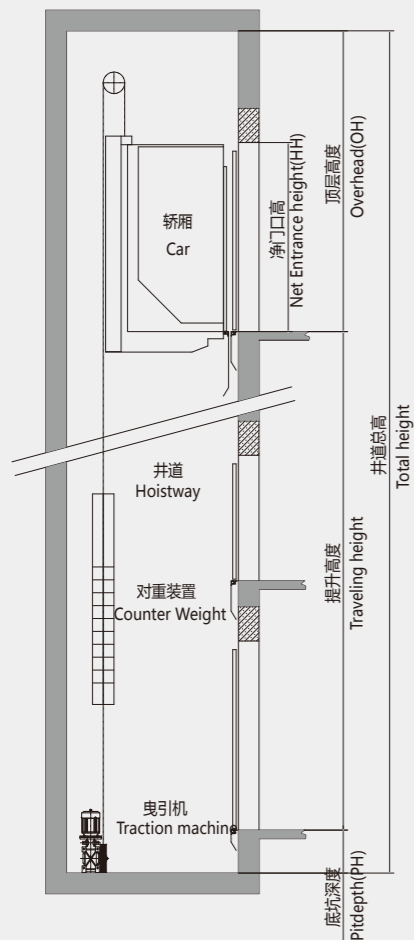
家用电梯 Home Lift

✓ TVJ 家用电梯
TVJ Home Lift

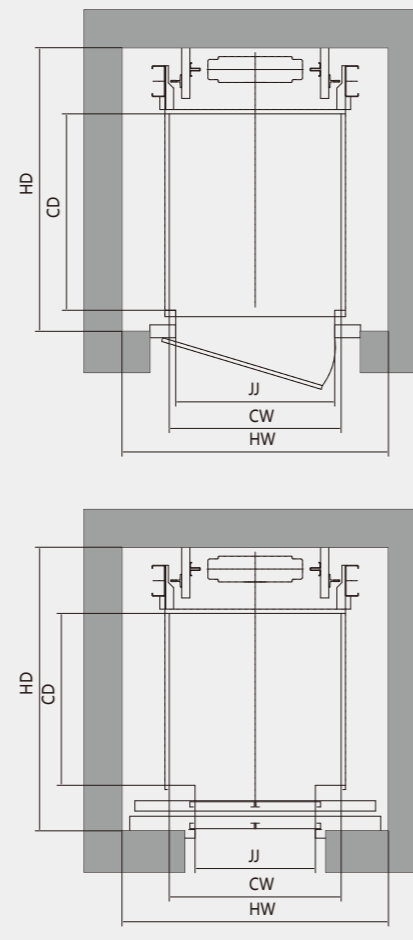


杂物电梯 Dumbwaiter

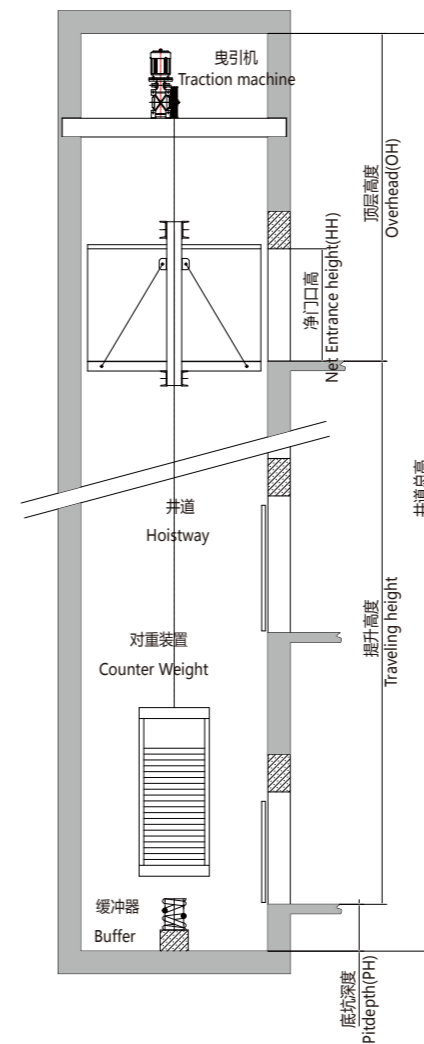
✓ TDJ 杂物电梯
TDJ Dumbwaiter



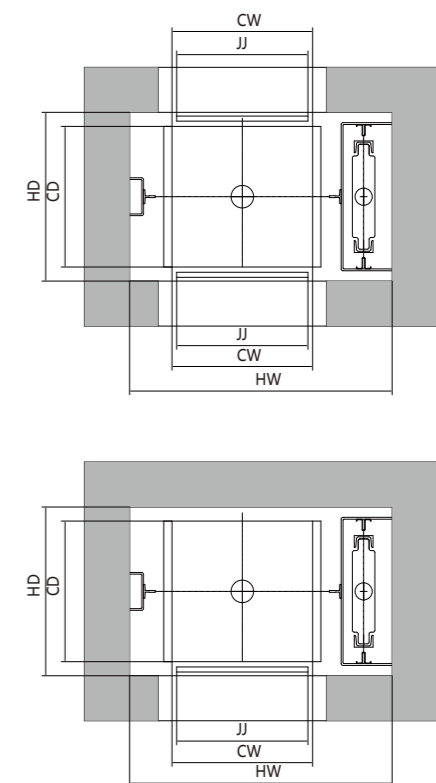
井道立面图 Hoistway vertical section



井道平面布置图 Hoistway plane layout



井道立面图 Hoistway vertical section



井道平面布置图 Hoistway plane layout

TVJ家用电梯技术参数 TVJ home lift technical parameters

型号 Type	载重量 Loading capacity (Kg)	人数 Persons	速度 Speed (M/s)	轿厢 Car size (mm)		门宽 Door opening (mm)	净门高 Net gate	井道 Hoistway (mm)		顶层高 Top floor height (mm)	底坑深 Pit depth (mm)
				CW	CD			JJ	HH		
TVJ250/0.3	250	3	0.4	900	850	700	2000	1450	1550	≥3400	≥500
TVJ320/0.3	320	4	0.4	1000	900	750	2000	1600	1600	≥3400	≥500
TVJ320/0.3	320	4	0.4	1000	950	800	2000	1700	1650	≥3400	≥500
TVJ320/0.3	320	4(轮椅)	0.4	900	1200	800	2000	1700	1900	≥3400	≥500

TDJ 杂物电梯技术参数 Dumbwaiter technical parameters

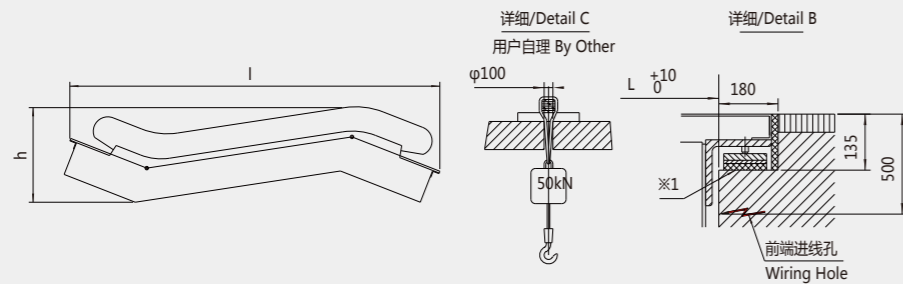
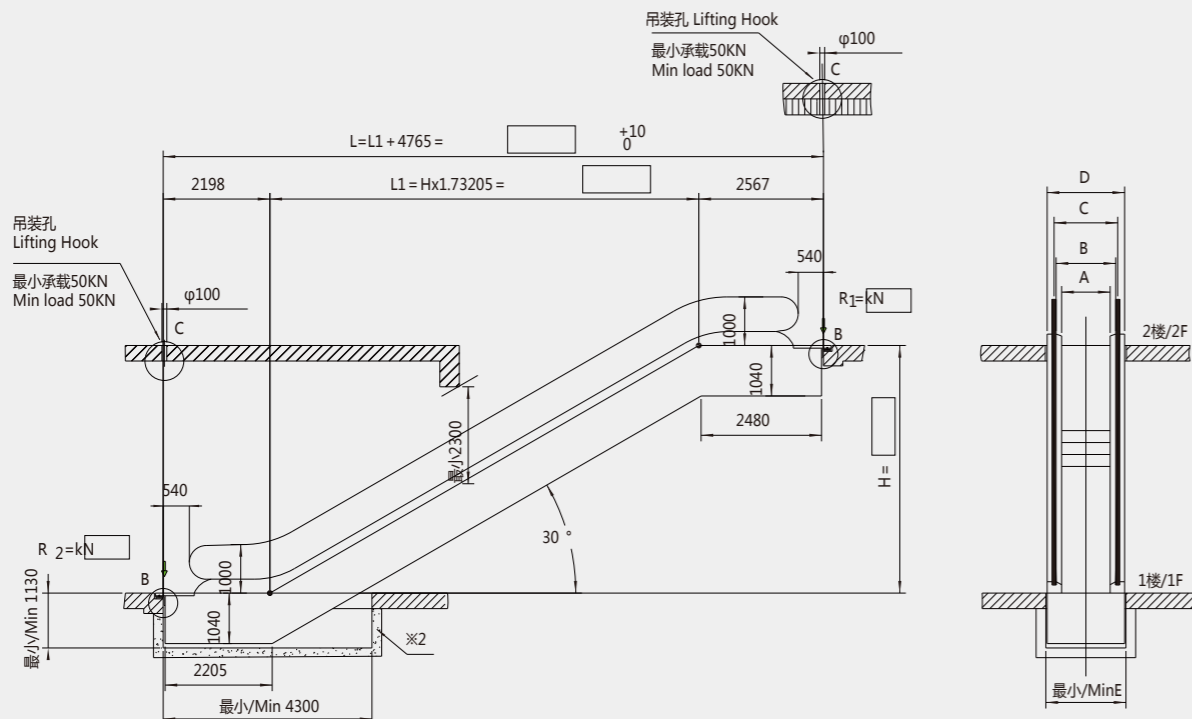
型号 Type	载重量 Loading capacity (Kg)	速度 Speed (M/s)	轿厢 Car size (mm)		门宽 Door opening (mm)	净门高 Net gate	井道 Hoistway (mm)		顶层高 Top floor height (mm)	底坑深 Pit depth (mm)
			CW	CD			JJ	HH		
TDJ100/0.4	100	0.4	750	750	700	1200	1200	900	≥3800	≥1000
TDJ200/0.4	200	0.4	1000	1000	950	1200	1450	1150	≥3800	≥1000
TDJ250/0.4	250	0.4	1000	1200	950	1200	1450	1350	≥3800	≥1000
TDJ300/0.4	300	0.4	1200	1200	1150	1200	1650	1350	≥3800	≥1000



自动扶梯(一) Escalator (I)

通用30度
Commercial 30 Degree

600 H_{max}=12.0m
FML 30-800 K H_{max}=9.0m
1000 H_{max}=7.5m



A	1000	800	600
B	1158	958	758
C	1238	1038	838
D	1540	1340	1140
E	1600	1400	1200
F	2310	2110	1910
G	15700	16900	18500

运输尺寸 Transport size							
H	3000	3500	4000	4500	5000	5500	6000
h	3090	3130	3160	3180	3210	3220	3240
l	10900	11890	12880	13870	14860	15860	16850

1. 技术要求:
- ① 支撑台面必须水平。
 - ② 如果此处有梯底坑, 梯底坑须要防水平整。
2. 每台功率: kw
3. 适合室内安装。
4. L>G时需中间支撑。

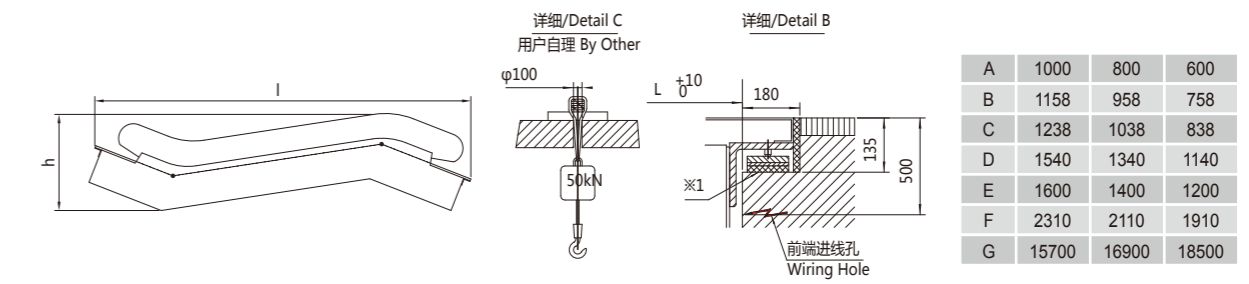
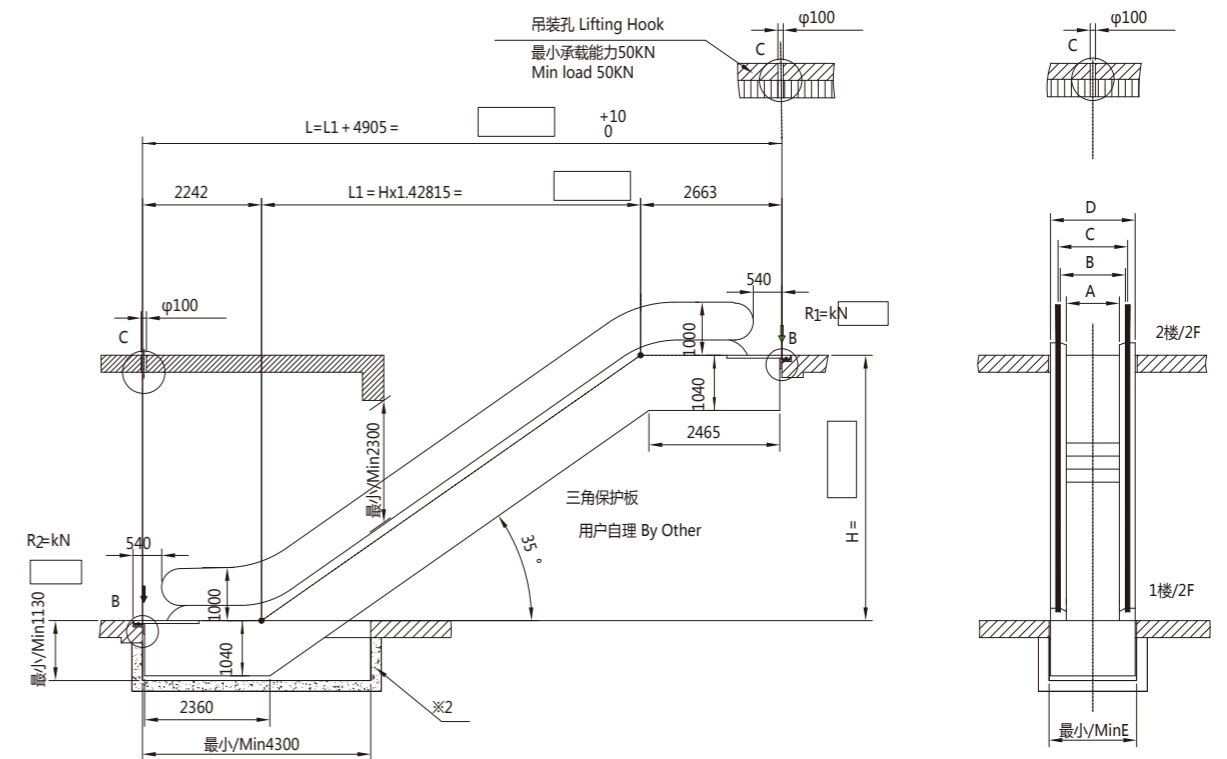
1. Technical Requirements
- ① The support face should horizontal.
 - ② If have the pit, the pit should water proof and horizontal.
2. Unit power: kw
3. Used for indoor installation.
4. When L>G, it should supply middle support.



自动扶梯(二) Escalator (II)

通用35度
Commercial 35 Degree

600 H_{max}=6.0m
FML 35-800 K H_{max}=6.0m
1000



A	1000	800	600
B	1158	958	758
C	1238	1038	838
D	1540	1340	1140
E	1600	1400	1200
F	2310	2110	1910
G	15700	16900	18500

运输尺寸 Transport size							
H	3000	3500	4000	4500	5000	5500	6000
h	3090	3130	3160	3180	3210	3220	3240
l	10180	11030	11890	12750	13610	14470	15330

1. 技术要求:
- ① 支撑台面必须水平。
 - ② 如果此处有梯底坑, 梯底坑须要防水平整。
2. 每台功率: kw
3. 适合室内安装。
4. L>G时需中间支撑。

1. Technical Requirements
- ① The support face should horizontal.
 - ② If have the pit, the pit should water proof and horizontal.
2. Unit power: kw
3. Used for indoor installation.
4. When L>G, it should supply middle support.



自动人行道(一) Passenger Conveyor (I)

水平型
Horizontal Type

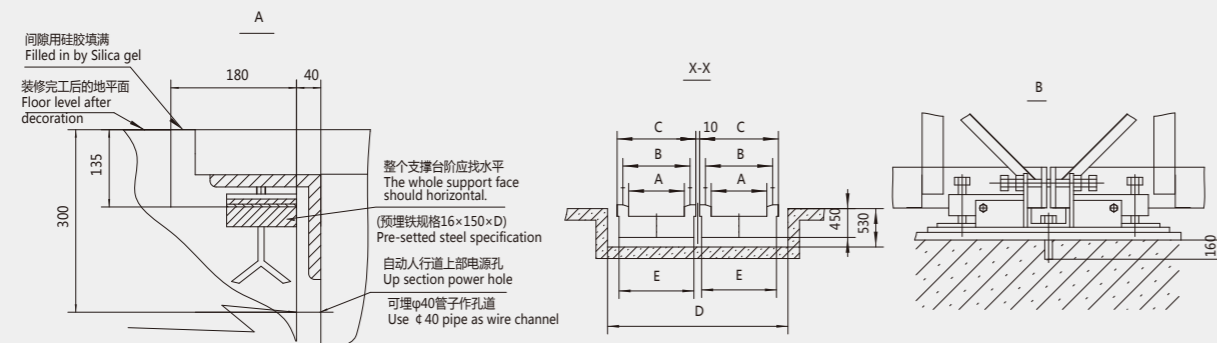
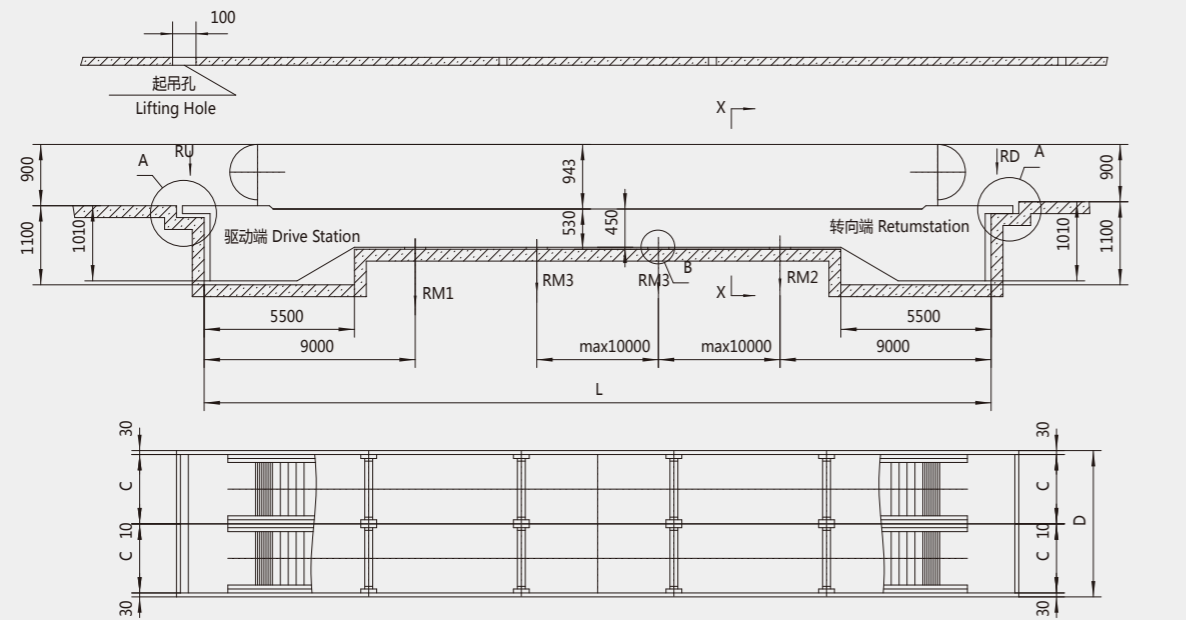
DMH 800 $\alpha=0^\circ$ 时
1000 $L_{max}=150m$ $0^\circ-6^\circ$



自动人行道(二) Passenger Conveyor (II)

紧凑型
Inclined Type

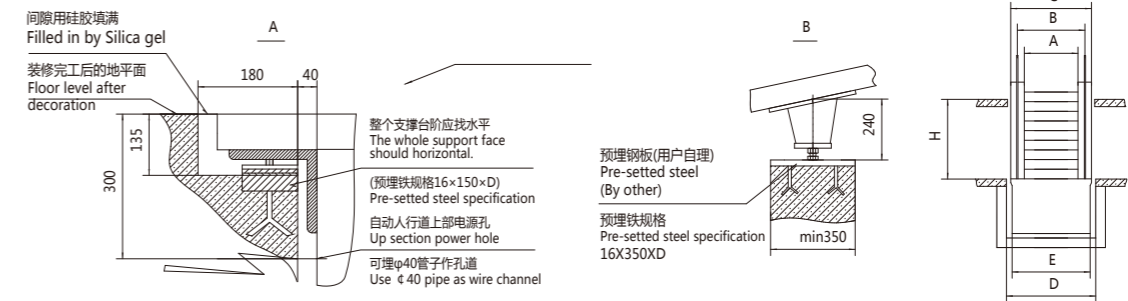
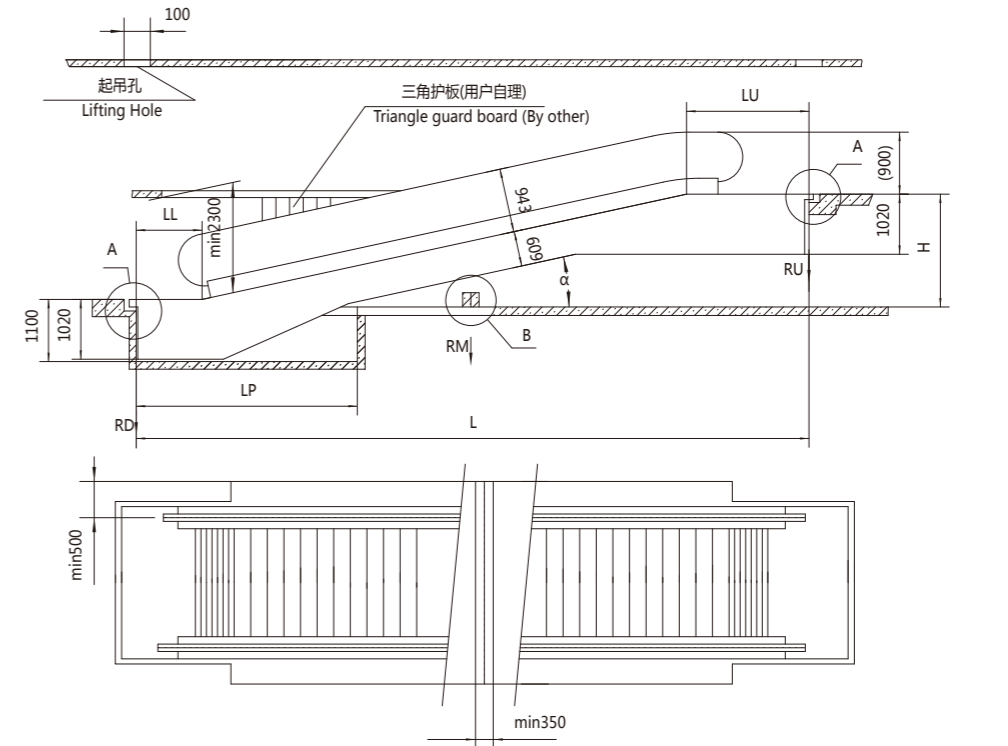
DMG 10° 800 $H_{max}=8.0m$
 $11^\circ-12^\circ$ 1000 $H_{max}=6.6m$ $10^\circ-12^\circ$



	B	B	C	D	E
NKMH800	800	1110	1400	2870	1360
NKMH1000	1000	1310	1600	3270	1560

速度(m/s) Speed	0.5		0.65		0.75	
宽度(mm) Width	800	1000	800	1000	800	1000
功率(KW) Power	最大输送长度 Max Horizontal span(m)					
5.5	84	73	71	61	65	55
8	124	107	104	89	95	87
11	150	150	150	139	147	125
15				150	150	150

1. 输送长度L尺寸根据用户需要。
2. RD、RU、RM 支承载力在签定合同时向公司咨询。
1. The horizontal span (L) according to clients' equipment.
2. Consulting RD, RU and RM reaction load from company.



A	B	C	D	E	K1	K2
1000	1310	1590	1700	1560	15000	3000
800	1110	1390	1500	1360	16300	32600

倾斜角 α Inclined degree	10°	11°	12°
LU	1732	1740	1739
LL	1031	1031	965
LP	5500	4800	4500
L	$5.6713xH+2763$	$5.1446xH+2771$	$4.7046xH+2704$

1. 当 $L > K1$ 时,需1个中间支撑。当 $L > K2$ 时,需2个中间支撑。
2. RD、RU、RM 支承载力请向公司咨询。

1. When $L > K1$, it need one piece middle support; When $L > K2$, it need 2 pieces middle support.
2. Consulting RD, RU and RM reaction load from company.

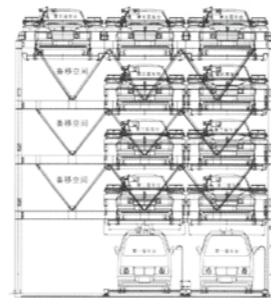


立体停车库 Car Parking System

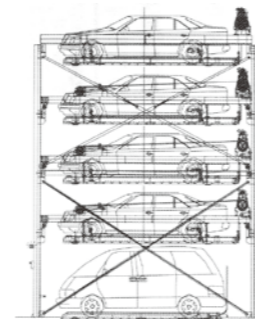
✓ 五层升降横移式
Five layer lifting transverse-moving type

标准规格 Standard specifications

项目 Project	型式 Type		五层升降横移式 Five layer lifting transverse-moving type	
			MS5D-MY	MS5D-LZ
收容车辆尺寸 Vehicle size.	车长 (mm)	横移车台 Traverser station	5200	5400
		其他车台 Other vehicle platform	5000	5200
	车宽 (mm)	车宽 (mm)	1900	1950
		车长 (mm)	横移车台 Traverser station	2050
	其他车台 Other vehicle platform	1550	1550	
装置尺寸 The size of the device	车重 (KG)		2000	2000
	全长 (mm)		6125	6325
	全宽 (mm)		2450xN+595	2500xNx595
梁下净高 (mm)		8850以上		
驱动方式 Drive mode	电动机双钢索传动 Motor double rope transmission			
操作方式 Operation mode	数码按键式操作和感应叫车 Digital push-button operation and induction of car			
驱动装置 Driving device	电源 Power supply		三相交流 The three-phase AC : 380V 50Hz	
	电动机(升降) Motor (lift)		3.7kw-4p (4、5层)	
	电动机(升降) Motor (lift)		2.2kw-4p (2、3层)	
驱动时间 Driving time	电动机(横移) Motor (Traverse)		0.2kw-4p	
	升降速度 Lifting speed		5.6/M Min (4、5层)	
	升降速度 Lifting speed		3.6/M Min (2、3层)	
横移速度 Traverse speed		7.6/M Min		
汽车收容台数 A number of automobile	(Nx5)-4			

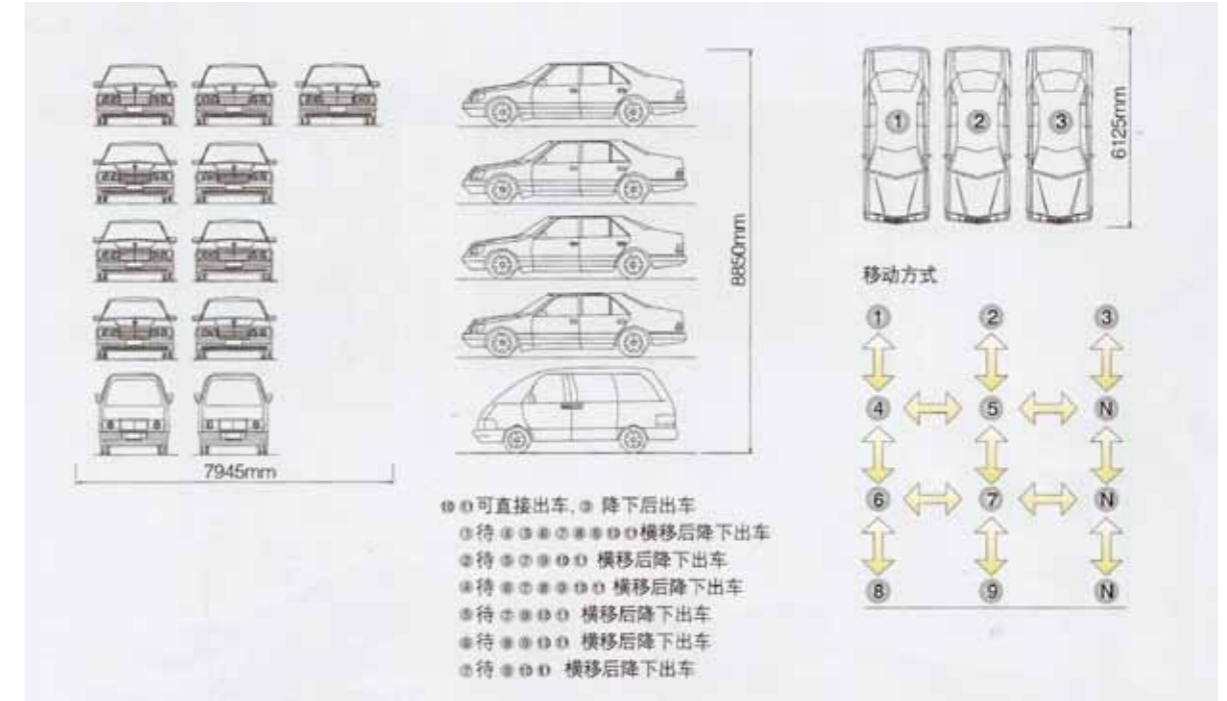


立体停车设备 前视图
Front View



立体停车设备 侧视图
Side View

此规格为MY型 This is my model.



✓ 产品简介

1. 采用载车板升降或横移存取车辆的机械式停车设备叫升降横移式立体停车库。
2. 升降横移类机械式立体停车设备因为造价较经济、组合方便、生产、安装周期短而广受业主青睐。
3. 由于升降横移类停车设备的组合方式较多，规模可大可小，对场地的适应性较强，因此，采用这类设备的停车场使用十分普遍。
4. 因为结构组合方便、多样，是目前使用最广泛的一种机械式立体停车设备，广泛应用于各类停车相对集中的区域，可放置于地面。

✓ Product introduction

1. The mechanical parking equipment using the car platform to vertical lifting and horizontal movement vehicles called as lifting transverse-moving car parking system.
2. Because of the economic cost, convenient combination, short period for production and installation, so the car parking system is well received by clients.
3. There are too many combination methods, and the structure is very flexible, so this type car parking system can adapt to any area, so it is used very widely.
4. Because of the structure combination easy and diversification, this is the very popular used car parking system at moment. It is applied to all kinds of parking centralized area.



▶ 电梯装潢

轿厢空间的优雅与舒适可带给人们在乘坐电梯时拥有最快乐舒心的心情。
富奥电梯的轿厢装潢秉承精品原则，每处细节都能让您体会到富奥的贴心。

▶ Elevator Decoration

Elegant and comfortable elevator cars bring great happiness to passengers. Cars decoration are made based on the principles of quality, passengers can have intimate from every detail.

乘客梯轿厢(标配) Passenger Elevator Car (Standard)

设计新颖高雅，空间宽敞明亮，吊顶、轿厢壁和底板可任意排列组合，满足个性化要求，彰显华贵气质。

Elevator car with novel and graceful design, broad and bright space. Ceilings, car walls and floors can be wilfully assembled to meet individual different demands and show an aristocratic personality.

吊顶	发纹不锈钢框架，亚克力顶板及灯饰
轿壁	发纹不锈钢
轿门	发纹不锈钢
轿底	PVC地板
操纵箱	发纹不锈钢面板
外呼	发纹不锈钢面板

Ceiling:
Stainless steel frame, acrylic roof and lighting cover
Car walls:
Hairline stainless steel
Car door:
Hairline stainless steel
Car floor:
PVC
C.O.P:
Hairline stainless steel panel
Landing Call:
Hairline stainless steel panel



▶ PFT 001



▶ PFD 001



▶ PFIND 001



▶ PFCOP001

乘客梯 多元化装饰 (选配)
Passenger Elevator Car-Variou Selections (Optional)



▲ PFT 101
钛金、镜面、蚀刻、发纹
Ti-glod, Mirror, Etching, Hairline st/st



▲ PFT 102
钛金、镜面、蚀刻、发纹
Ti-glod, Mirror, Etching, Hairline st/st



▲ PFT 103
钛金、镜面、蚀刻、发纹
Ti-glod, Mirror, Etching, Hairline st/st



▲ PFT 104
钛金、镜面、蚀刻、发纹
Ti-glod, Mirror, Etching, Hairline st/st



▲ PFT 105
钛金、镜面、蚀刻、发纹
Ti-glod, Mirror, Etching, Hairline st/st



▲ PFT 106
钛金、镜面、蚀刻、发纹
Ti-glod, Mirror, Etching, Hairline st/st



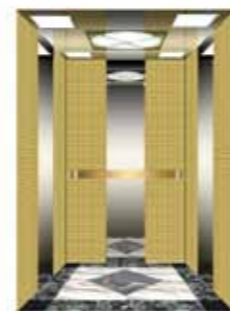
▲ PFT 107
木纹
Grain



▲ PFT 108
钛金、镜面、蚀刻、发纹、凹部金色
Ti-glod, Mirror, Etching, Hairline, Concave glod st/st



▲ PFT 109
钛金、镜面、蚀刻、发纹
Ti-glod, Mirror, Etching, Hairline st/st



▲ PFT 110
钛金、镜面、蚀刻、发纹
Ti-glod, Mirror, Etching, Hairline st/st

观光梯轿厢 (标配)
Panoramic Car (Standard)

吊顶	发纹不锈钢框架, 亚克力顶板及灯饰
轿壁	发纹不锈钢
轿门	发纹不锈钢
轿底	PVC地板
操纵箱	发纹不锈钢面板
外呼	发纹不锈钢面板

Ceiling:
Stainless steel frame, acrylic roof and lighting cover
Car walls:
Hairline stainless steel
Car door:
Hairline stainless steel
Car floor:
PVC
C.O.P:
Hairline stainless steel panel
Landing Call:
Hairline stainless steel panel



▲ PFG 001



▲ PFIND 001 ▲ PFCOP001

观光梯 多元化装饰
Panoramic Car-Variou Selections



▲ PFG 002
钛金、镜面、蚀刻、发纹、安全玻璃
Ti-glod, Mirror, Etching, Hairline, Safety glass st/st



▲ PFG 003
钛金、镜面、蚀刻、发纹、安全玻璃
Ti-glod, Mirror, Etching, Hairline, Safety glass st/st



▲ PFG 004
镜面、发纹、安全玻璃
Mirror, Hairline Safety glass st/st



▲ PFG 005
镜面、发纹、安全玻璃
Mirror, Hairline Safety glass st/st

货梯轿厢 (标配) Freight Elevator Car (Standard)



PFH 001



PFH 002

富奥载货电梯轿壁与轿顶采用喷漆钢板制成，底板为花纹钢板。选材上坚固耐用。配合长形日光灯与风扇，轿厢内饰简洁明快。

The car wall and ceiling of freight elevator are made of painted steel, the floor is patterned steel. The material is durable and strong and ensure beautifully coordination. With long shape fluorescent lamp and fan.



PFC 001



PFC 002

货梯轿厢门 (标配)
Freight elevator car door (standard)

医用梯轿厢 Bed Elevator Cabin



PFB 001



PFB 002

严格执行国际、国内医用电梯标准来设计、生产、制造。富奥医用电梯兼顾安全与舒适，可广泛用于医院及疗养院等医疗养护场所。

Bed Elevator cars are designed and manufactured strictly according to international and domestic standards. Considering both safety and comfortable, bed elevators can be widely used in hospitals and other health facilities.

照明吊顶 Ceilings



PFL 001



PFL 002



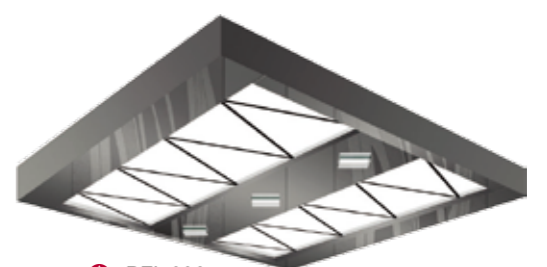
PFL 003



PFL 004



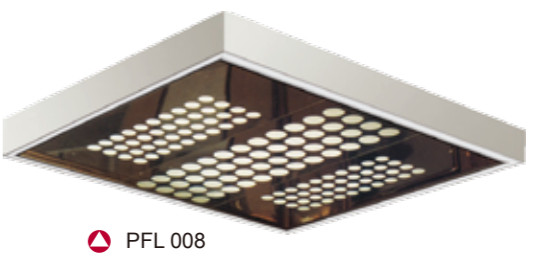
PFL 005



PFL 006

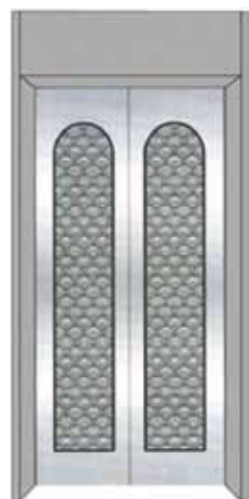


PFL 007



PFL 008

电梯门 Landing doors



▲ PFD 101
钛金、镜面
蚀刻、发纹
Ti-glod, Mirror,
Etching, Hairline st/st



▲ PFD 102
钛金、镜面
蚀刻、发纹
Ti-glod, Mirror,
Etching, Hairline st/st



▲ PFD 103
钛金、镜面
蚀刻、发纹
Ti-glod, Mirror,
Etching, Hairline st/st



▲ PFD 104
钛金、镜面
蚀刻、发纹
Ti-glod, Mirror,
Etching, Hairline st/st



▲ PFD 106
钛金、镜面
蚀刻、发纹
Ti-glod, Mirror,
Etching, Hairline st/st



▲ PFD 108
钛金、镜面、蚀刻
发纹、凹部金色
Ti-glod, Mirror,
Etching, Hairline,
Concave glod st/st



▲ PFD 109
钛金、镜面
蚀刻、发纹
Ti-glod, Mirror,
Etching, Hairline st/st



▲ PFD 110
钛金、镜面
蚀刻、发纹
Ti-glod, Mirror,
Etching, Hairline st/st



扶手 Handrail



● PFS 001



● PFS 002



● PFS 003



● PFS 004



● PFS 005

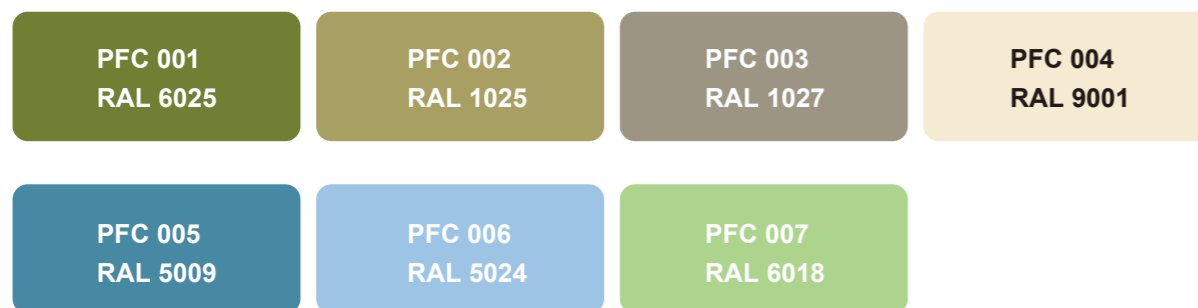


● PFS 006

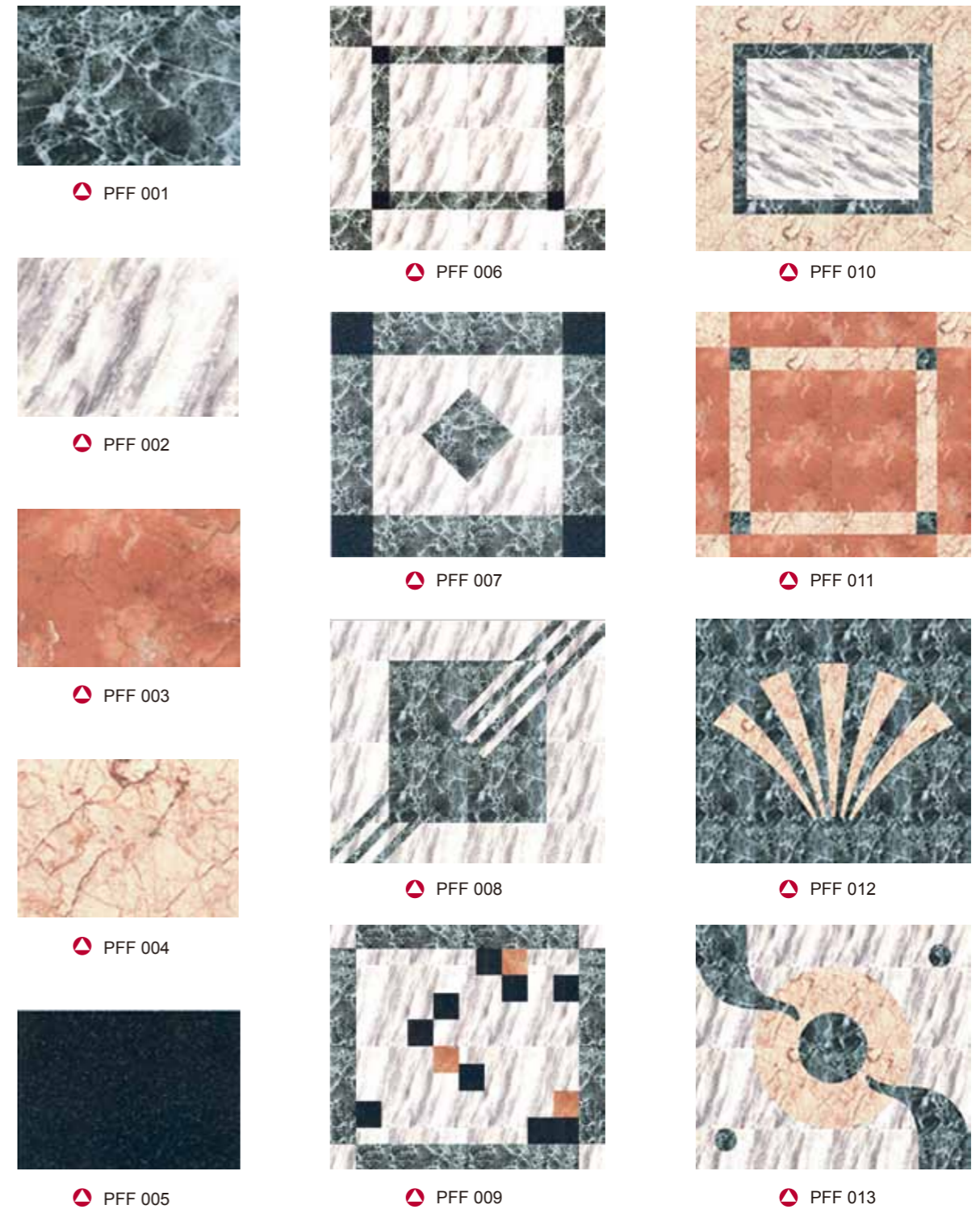
外呼操纵箱 C.O.P and Landing call



装饰颜色 Color



轿底装潢 Floor



公司业绩

以坚实技术为后盾，人才培养与开发为支柱，完善无忧的售后服务，使公司产品迅速打开国内外市场，产品远销东南亚，南美洲，非洲，欧洲，中东等地区。



Sales Achievements

With a solid technical backing, talent training and development as the pillar, perfect hassle-free after sale service, the company products quickly to open domestic and abroad markets, till now the products are exported to Southeast Asia, South America, Africa, Europe, the Middle East and other regions.

